



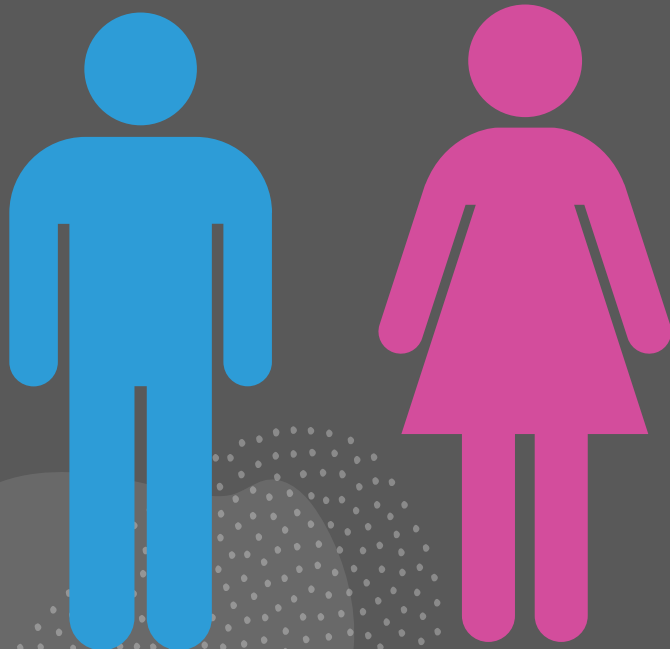
جامعة الاسكندرية

ALEXANDRIA UNIVERSITY

مركز المعلومات والتوثيق ودعم اتخاذ القرار

IDDC

Gender Report 2022-2023



Compiled by: Dr.Nadira Sobhy Mohamed

Information, Documentary & Decision Support Center

Alexandria University



Introduction

The Sustainable Development Strategy (**Egypt's Vision 2030**) outlines a strategic vision aimed at providing a high-quality education and training system for all, without discrimination. This vision ensures that students and trainees acquire the necessary skills to think creatively, while being technically and technologically empowered. It seeks to develop proud, creative, responsible, and competitive citizens who embrace diversity, value their country's history, and are committed to building its future, enabling them to compete regionally and internationally.

This report presents data on the number of students, postgraduates, staff, assistant staff, and employees. These figures are analyzed to monitor gender representation at Alexandria University, ensuring the percentage of female participants is tracked annually. This approach aligns with international standards and ensures gender equality in women's enrollment and participation at all levels.

All the data presented in this report is collected from department managers and is subsequently analyzed, interpreted, and compiled by the Information, Documentation, and Decision Support Center.



| Index | | |
|-------------------|--|--------------|
| Figure No. | Caption | Pages |
| 1-2 | Egyptian Students Public Program | 5 |
| 3-4 | Egyptian Students Private Program | 5 |
| 5-6 | International Students Public Program | 6 |
| 7-8 | International Students Private Program | 6 |
| 9-10-11 | Egyptian & International Students Public & Private Program | 7 |
| 12-13 | Total International & Egyptian Students Public & Private Program | 8 |
| 14-15 | Graduated Students | 9 |
| 16 | Faculty Members | 9 |
| 17 | Leadership Position Faculty Members | 10 |
| 18 | The Administrative Body | 10 |
| 19 | Leadership Position the Administrative Body | 11 |
| 20-21-22 | Temporary Employment / Appointing Type | 11 |
| 23 | People with Special Needs | 12 |
| 24 | Seconded | 12 |
| 25-26-27 | Postgraduate Students (Enrolled / New Students) | 13 |
| 28-29-30 | Enrolled / New Students Diploma. | 14 |



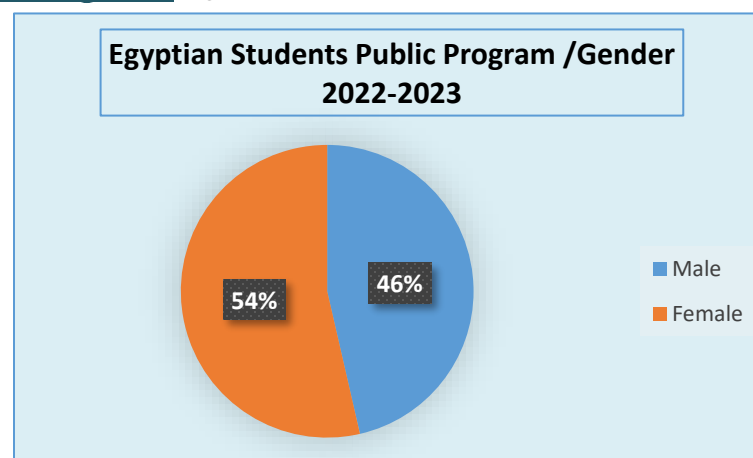
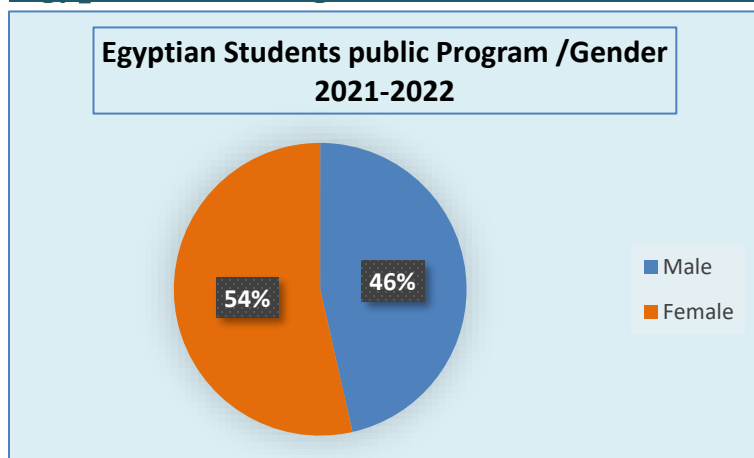
| Index | | |
|-------------------|------------------------------------|--------------|
| Figure No. | Caption | Pages |
| 31-32-33 | Enrolled / New Students Master. | 15 |
| 34-35-36 | Enrolled / New Students Doctorate. | 16 |
| 37-38-39 | Postgraduate Students Holding | 17 |
| 40-41-42 | Students Holding Diploma | 18 |
| 43-44-45 | Students Holding Master's Degree | 19 |
| 46-47-58 | Students Holding Doctorate. | 20 |
| ----- | Conclusions | 21 |



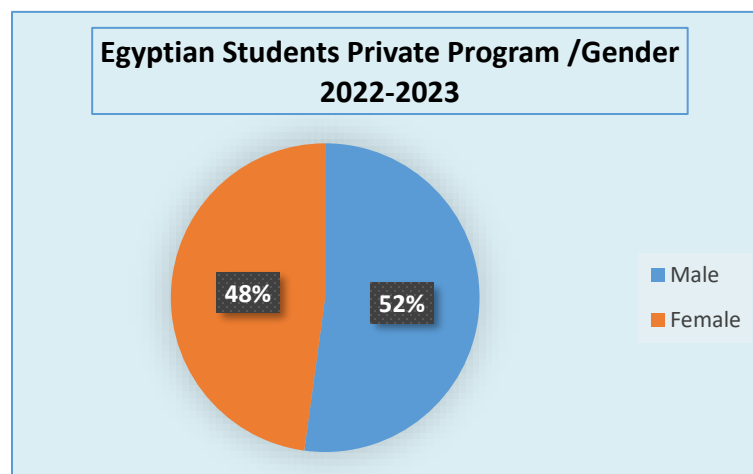
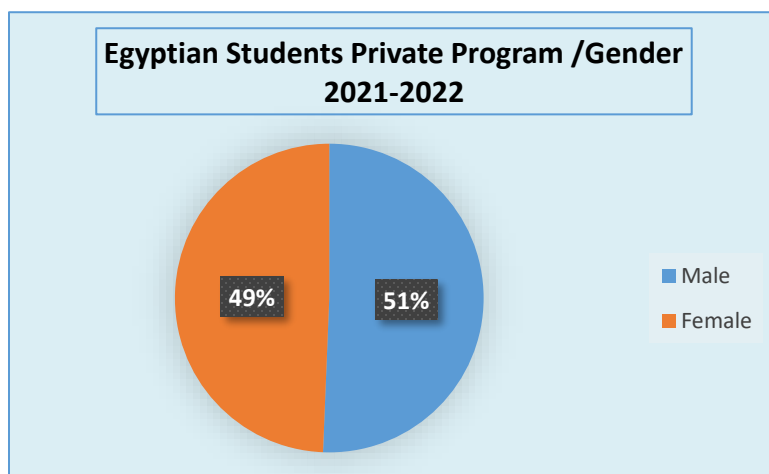
Undergraduate Students

The figures below show the percentage of male and female Undergraduate students (Egyptian & international) Public and Private program at Alexandria University from 2021 to 2023.

Egyptian Undergraduate Students Public Program Figures (1-2)

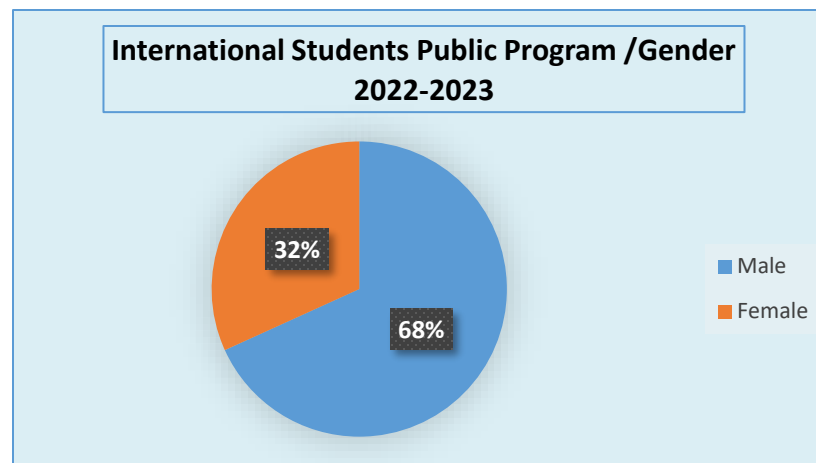
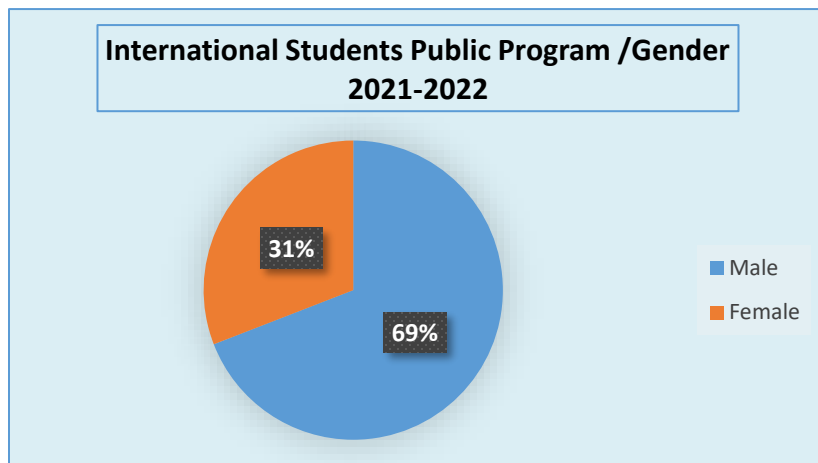


Egyptian Students Private Program Figures (3-4)

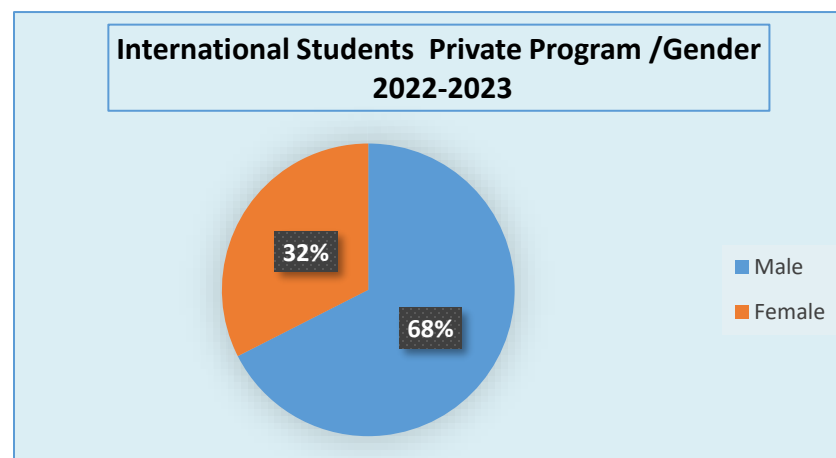
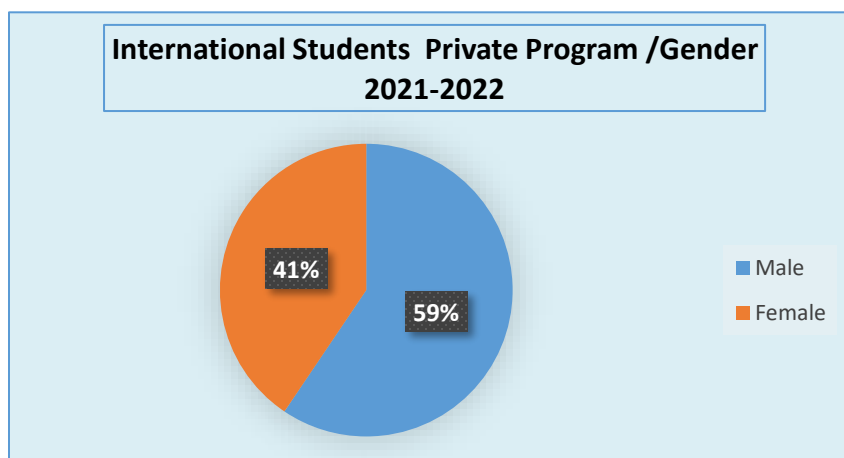




International Students Public Program Figures (5-6)

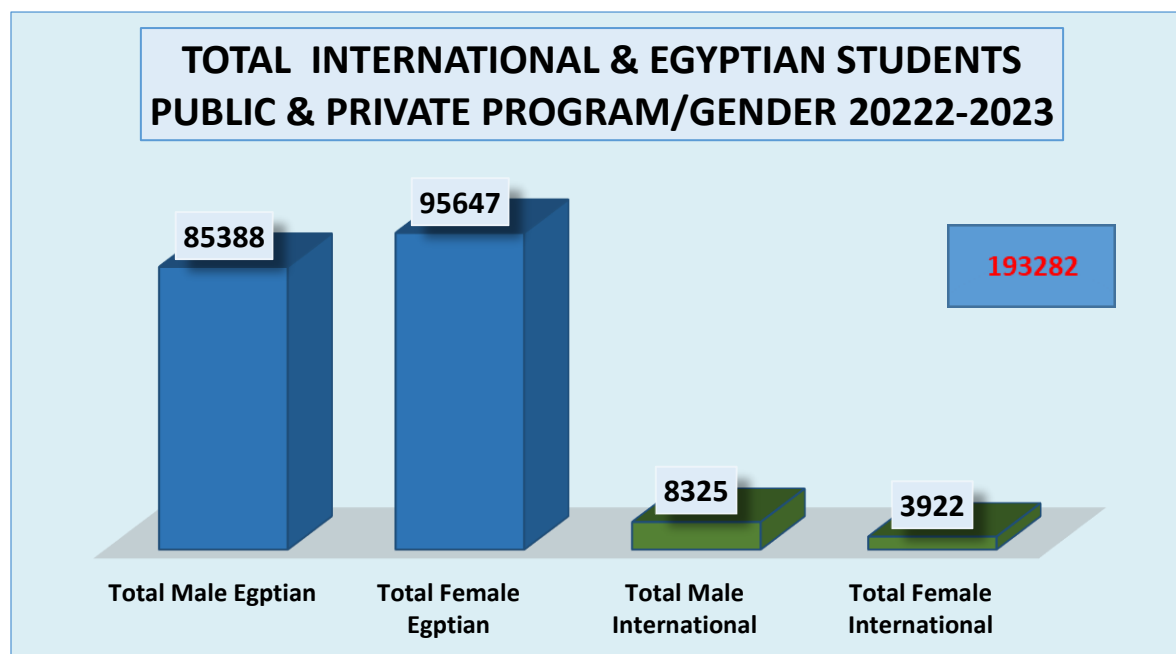
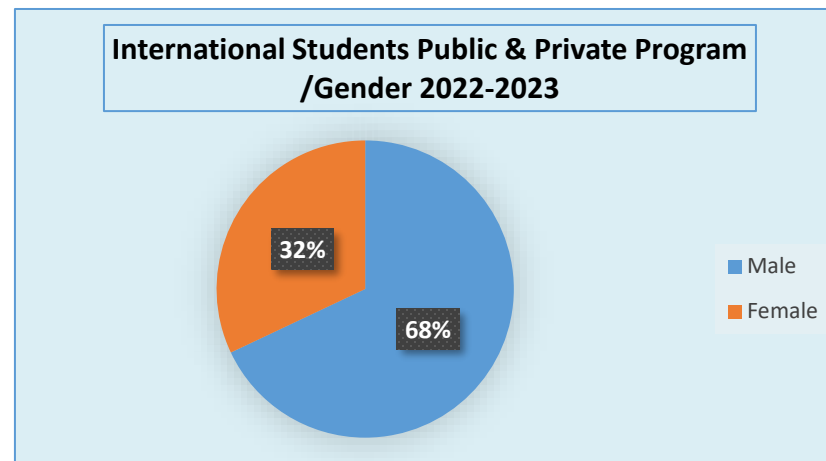
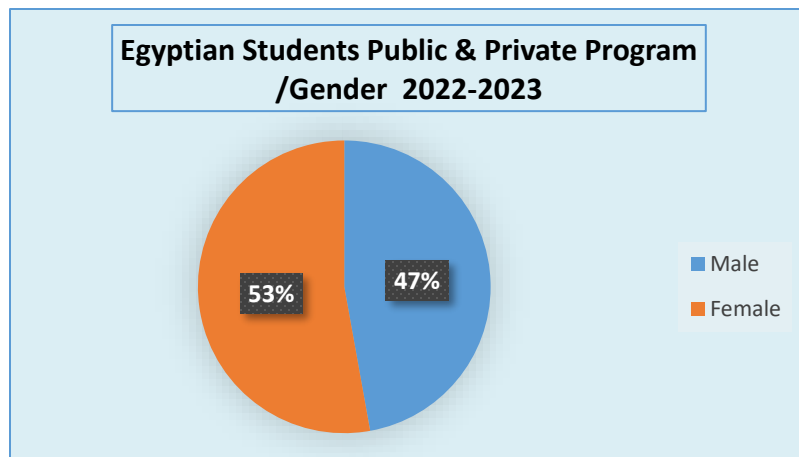


International Students Private Program Figures (7-8)



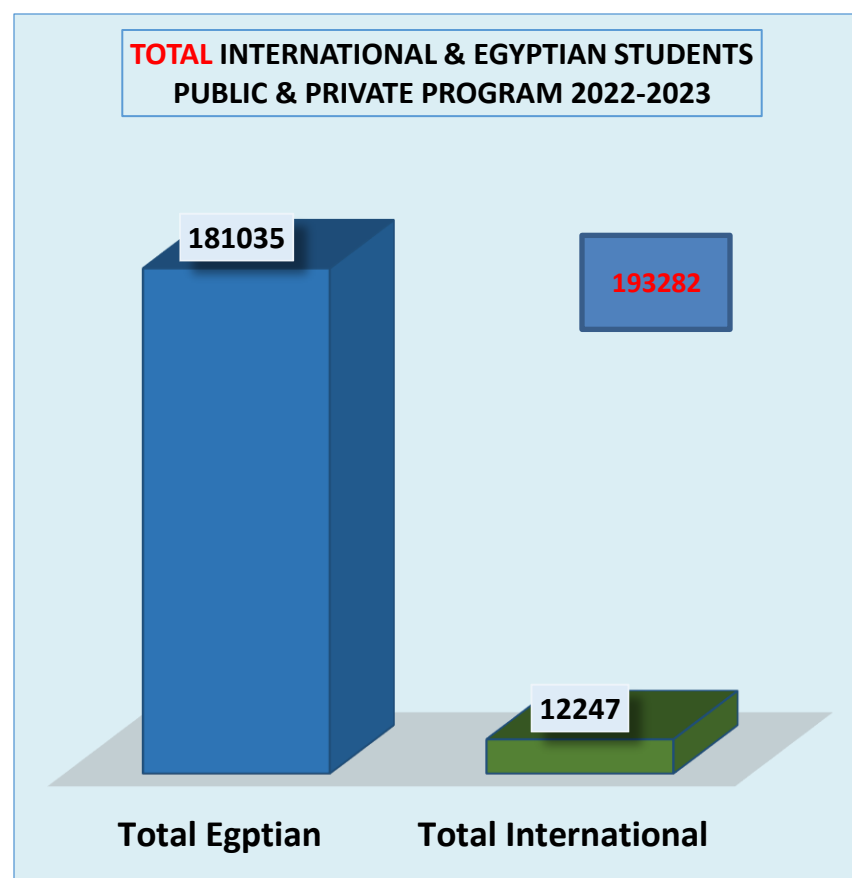
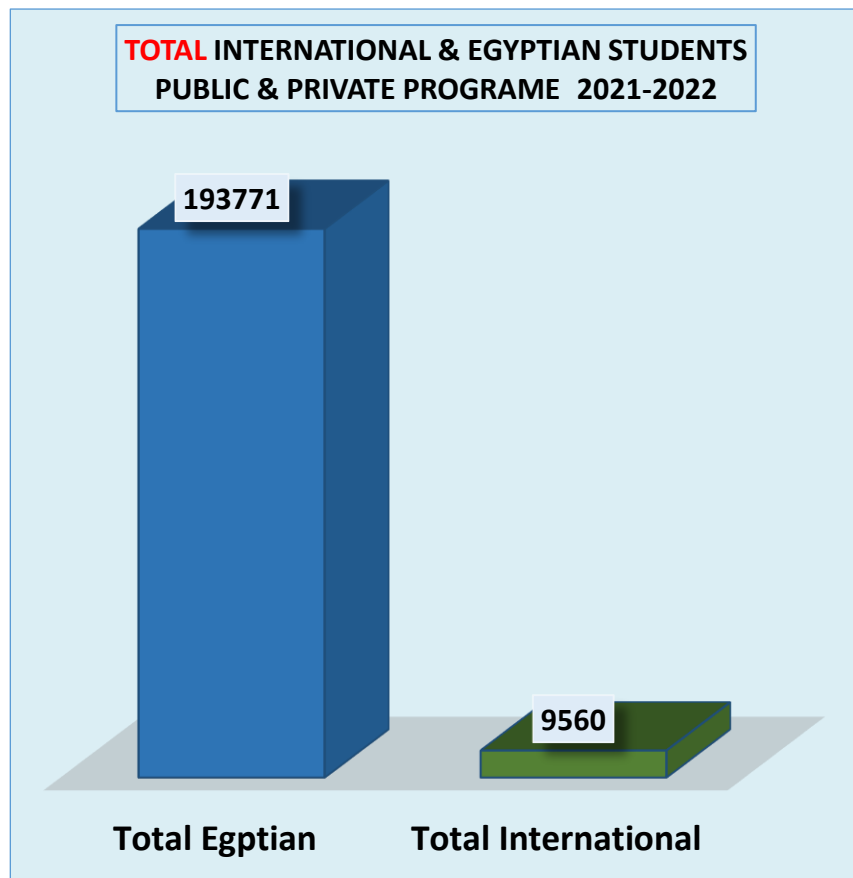


Percentage of Egyptian & International Students Public & Private Program Figures (9-10-11)



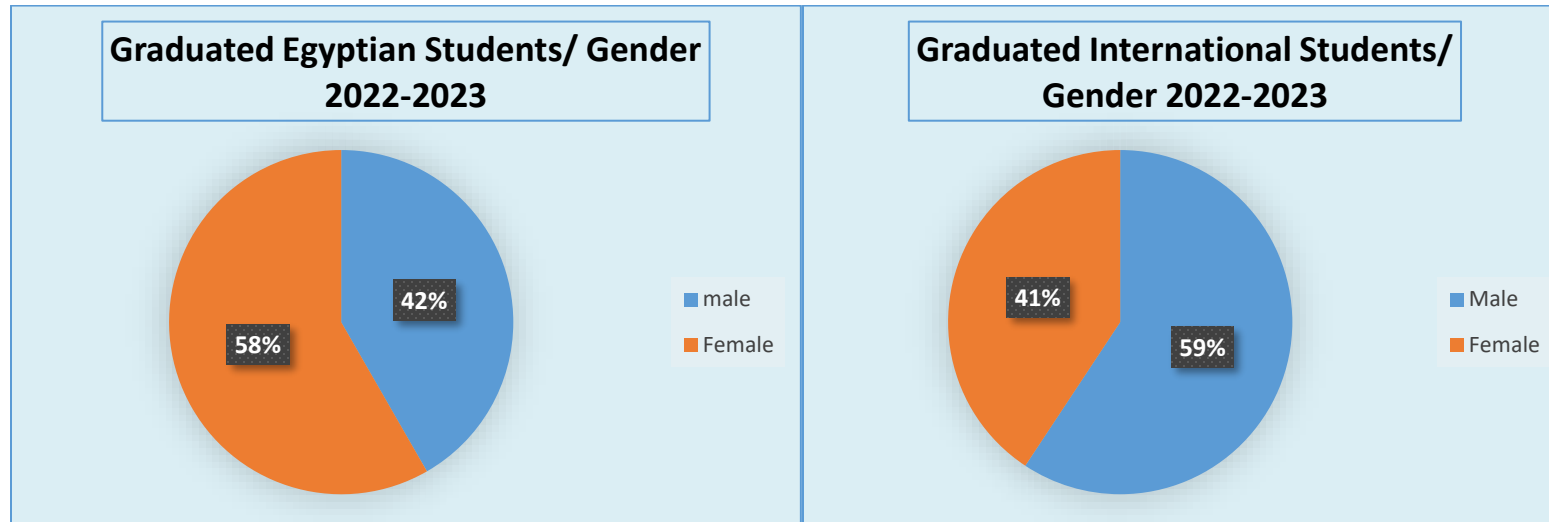


Total International & Egyptian Students Public & Private Program Figures (12-13)





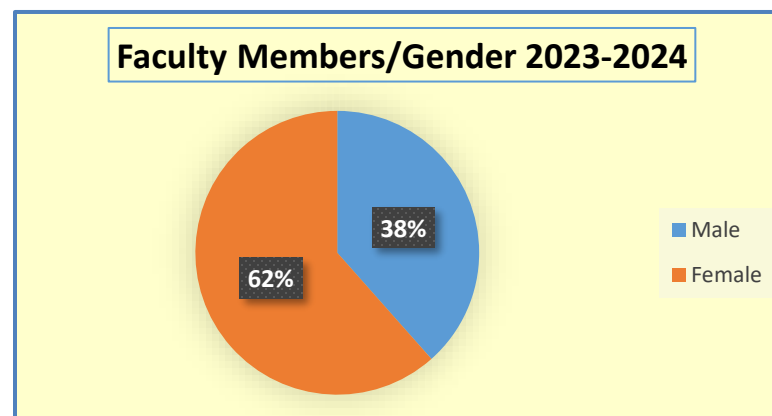
Graduate Students Figures (14-15)



Human Resources

Faculty Members Figures (16)

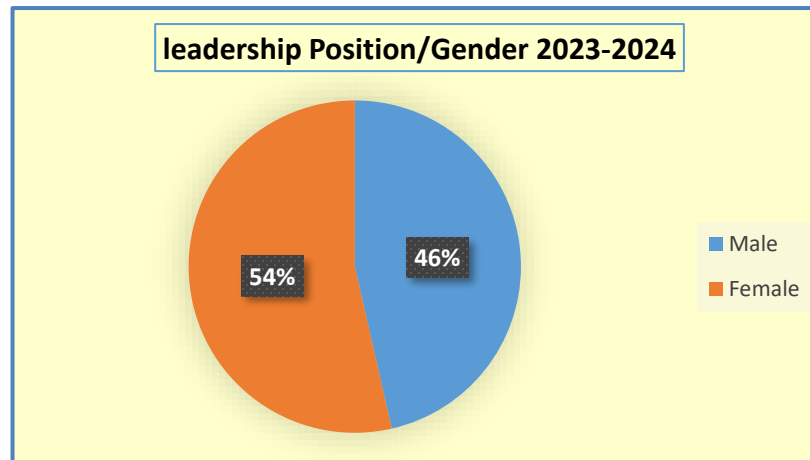
The Figures Below Show the Percentage of Male and Female Faculty Members at Alexandria University.





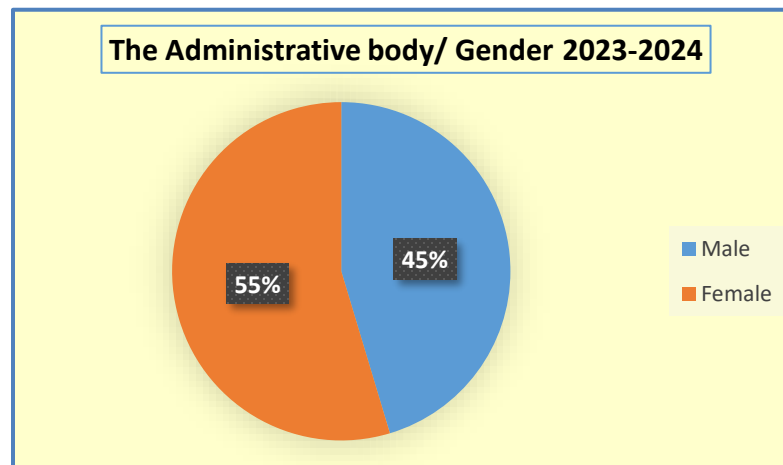
Leadership Position Faculty Members Figures (17)

The Figure below Show the Total Number & The Percentage of Male and Female Leadership Position of Faculty Members in Each Entity at Alexandria University.



The Administrative Body Figures (18)

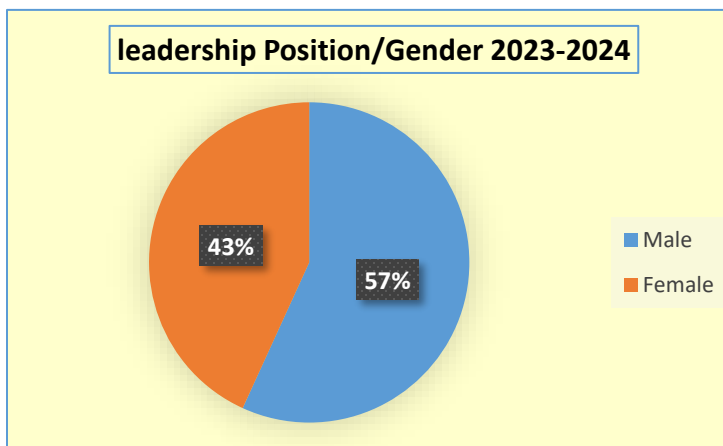
The Figure below Show the Percentage of Male and Female at Alexandria University





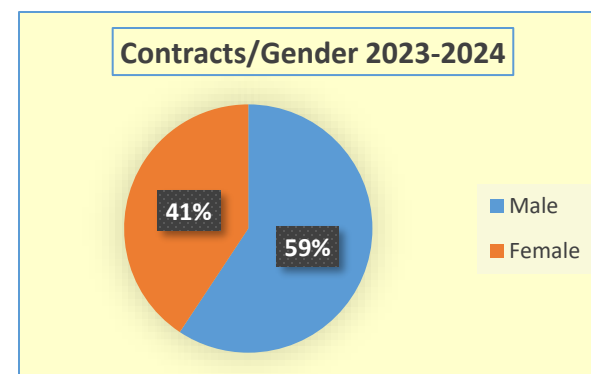
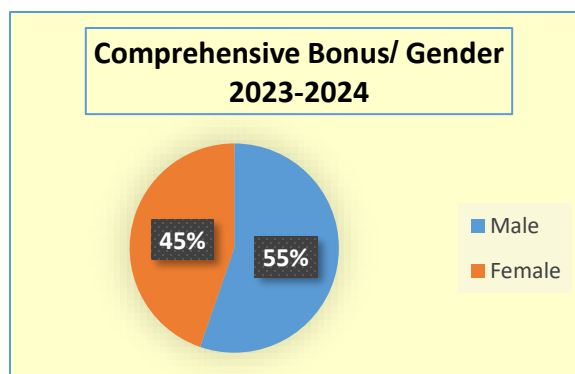
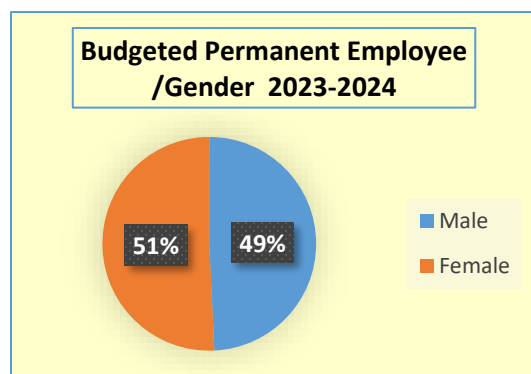
Leadership Position the Administrative Body Figures (19)

The Figures below Show the Percentage of Leadership Position the Administrative Body Male and Female at Alexandria University



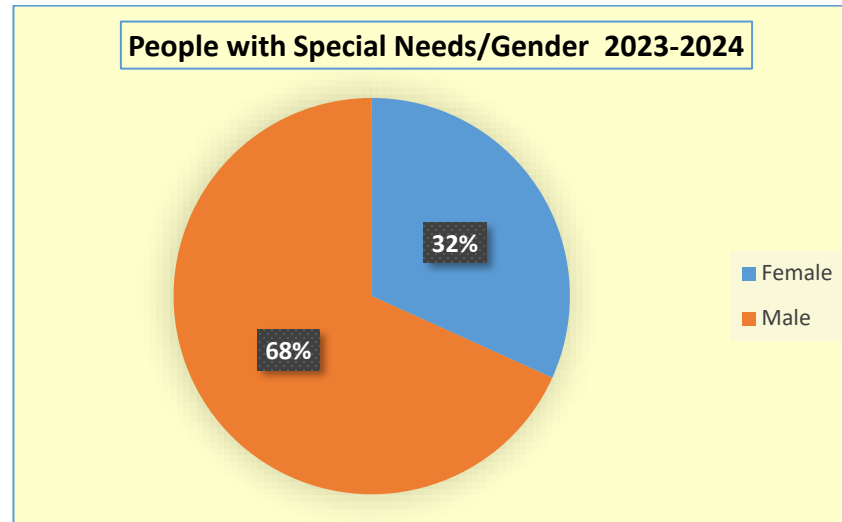
Temporary Employment / Appointing Type Figures (20-21-22)

The Figures below Show the Percentage of Temporary Employment / Appointing Type Male and Female at Alexandria University

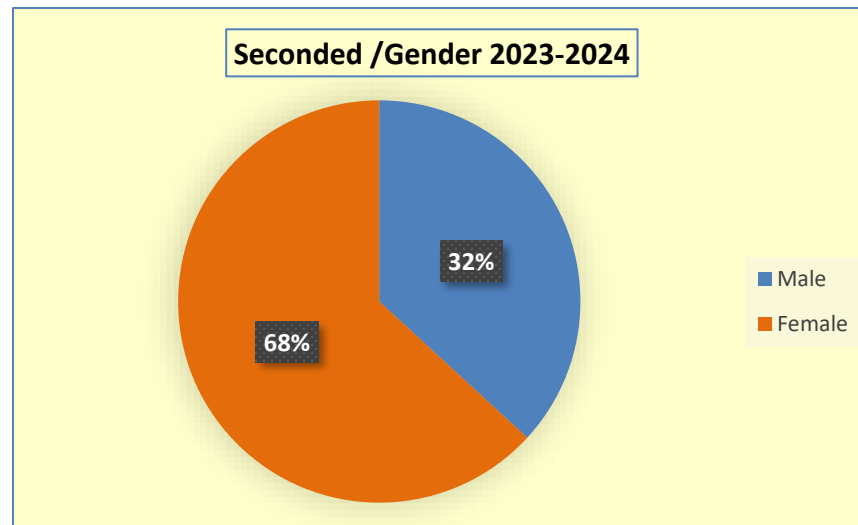




People with Special Needs Figures (23)



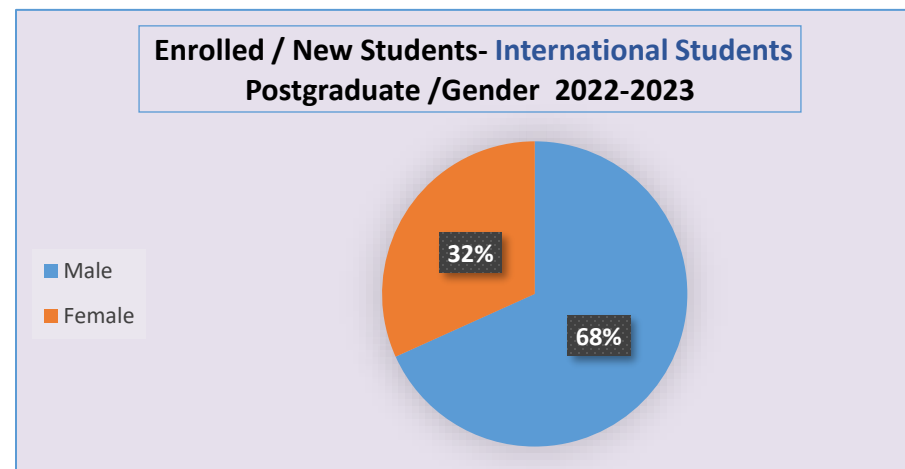
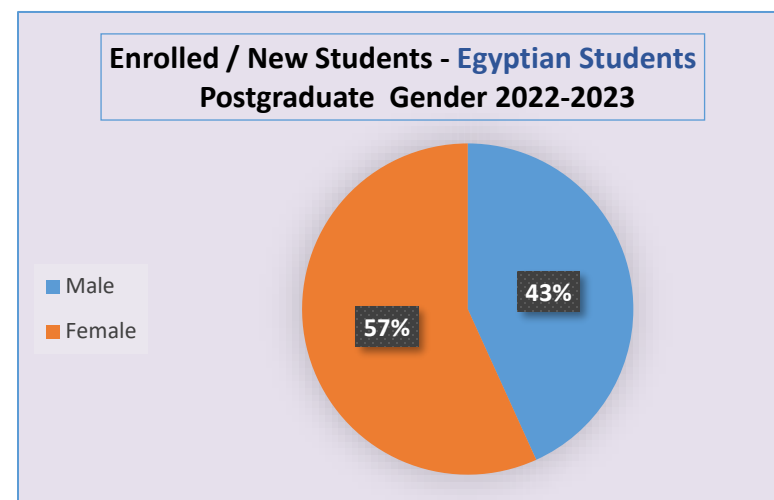
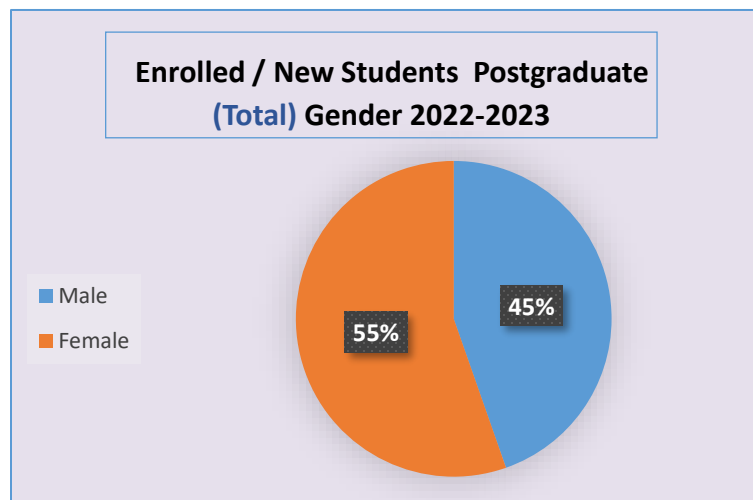
Secoded Figures (24)





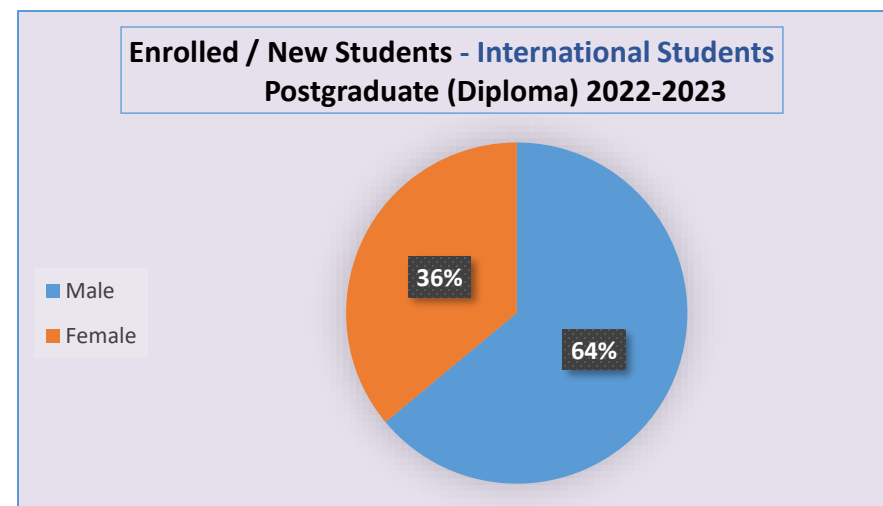
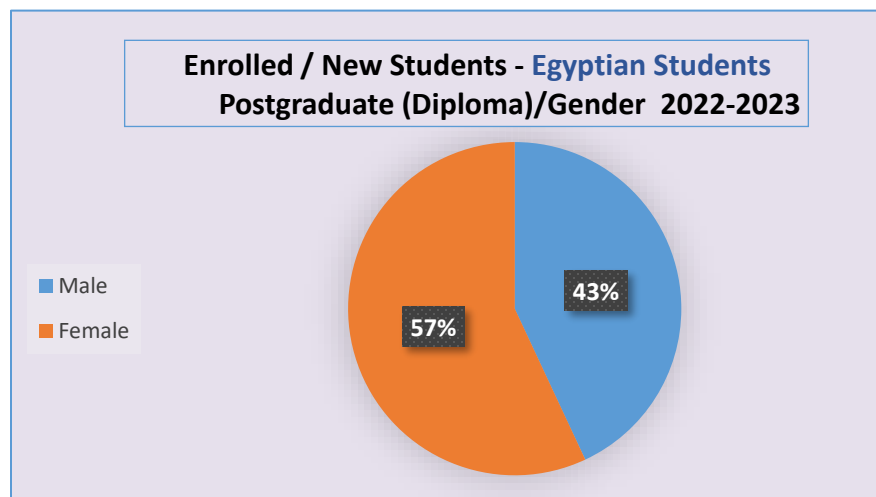
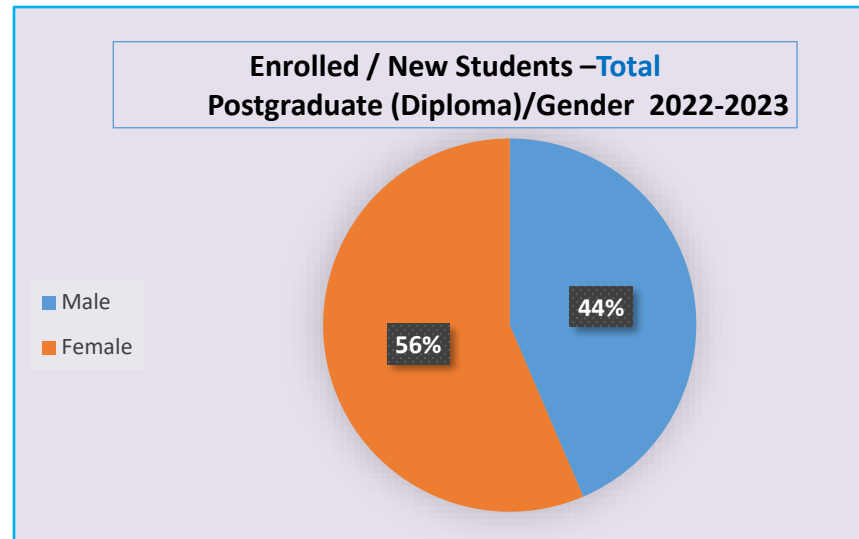
Postgraduate Students

Enrolled / New Students Figures (25-26-27)



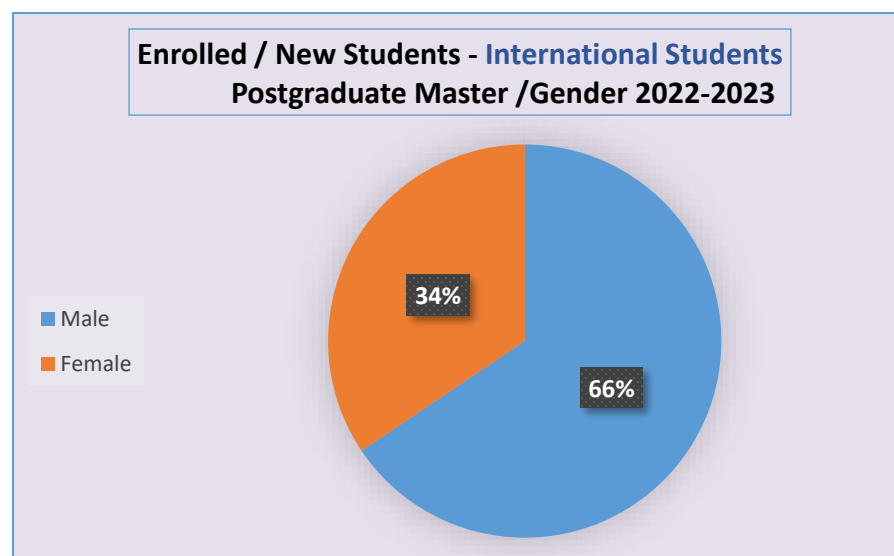
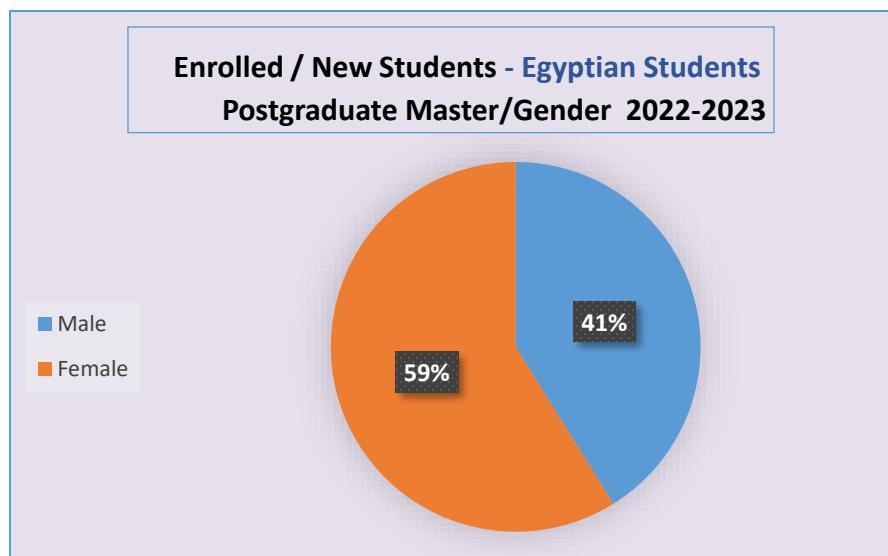
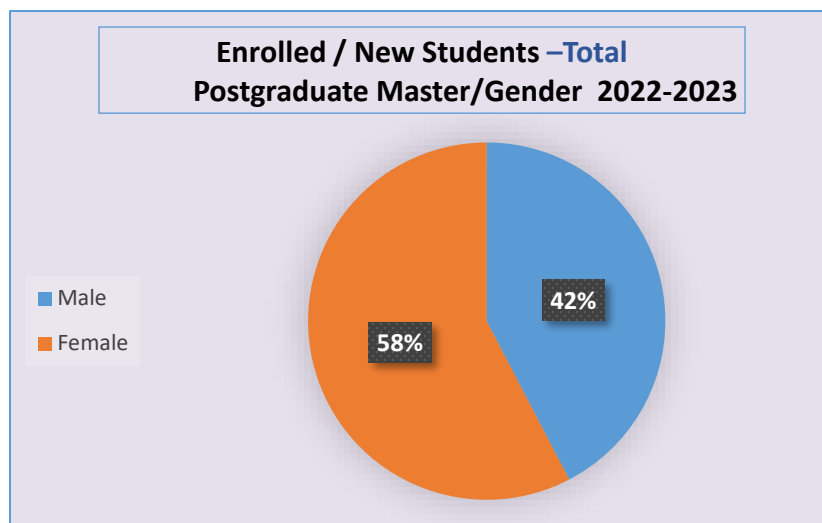


Enrolled / New Students Diploma Figures (28-29-30)



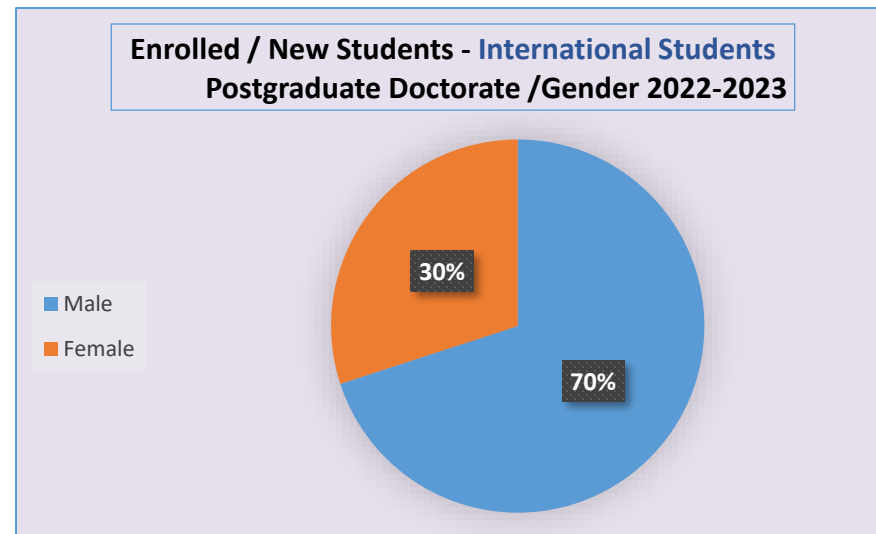
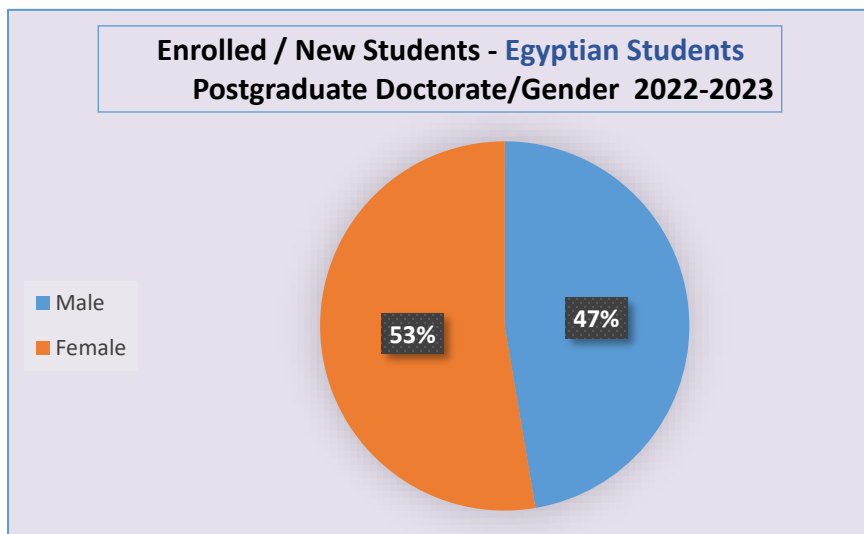
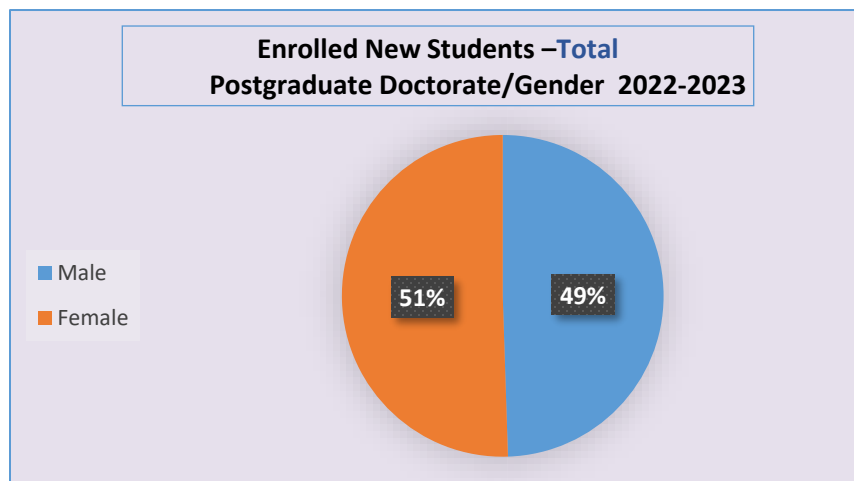


Enrolled / New Students Master. Figures (31-32-33)



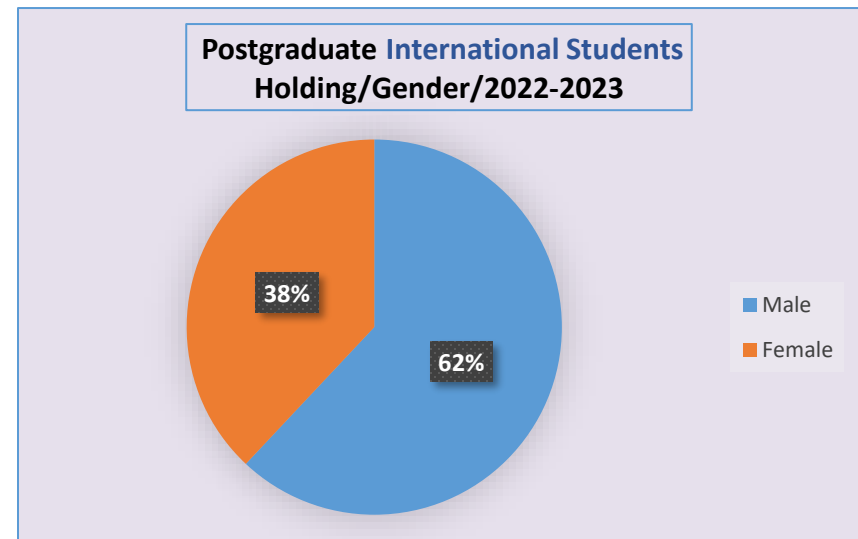
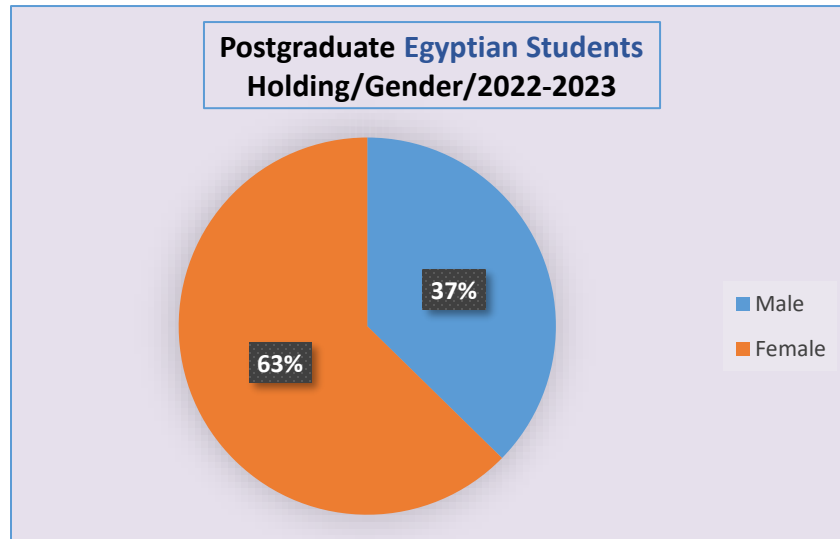
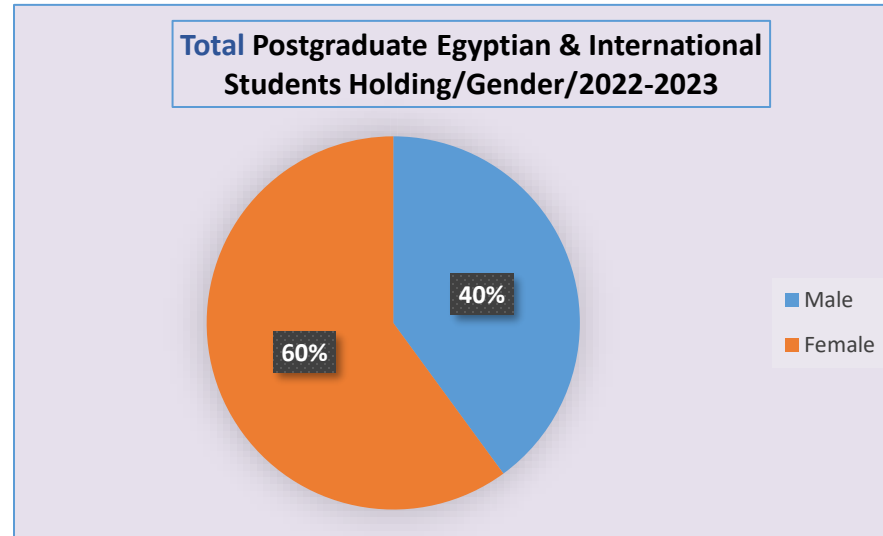


Enrolled / New Students Doctorate. Figures (34-35-36)



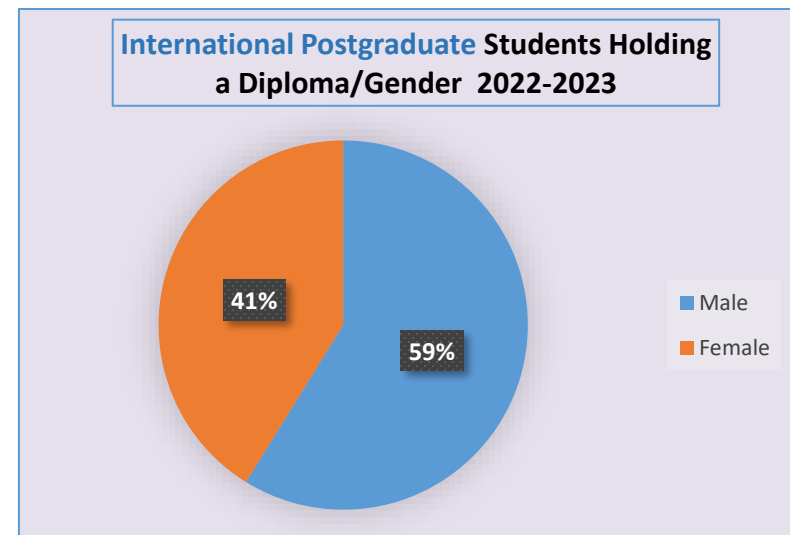
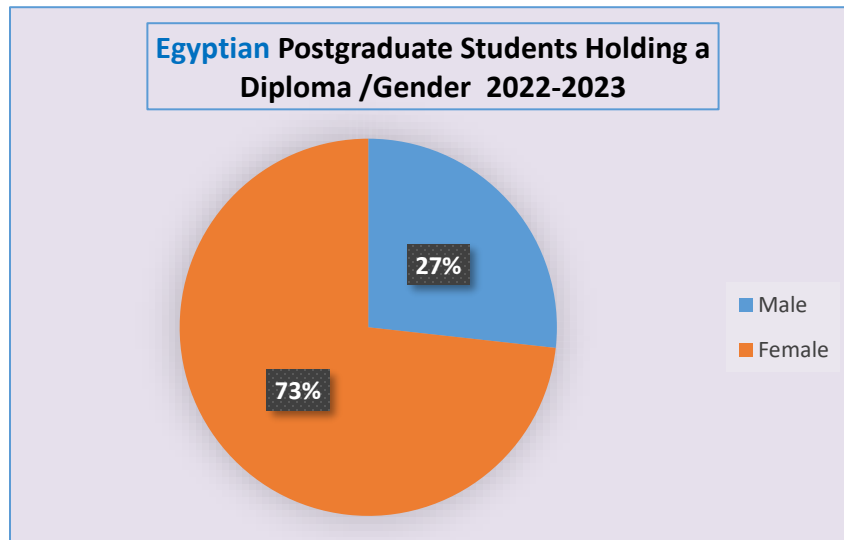
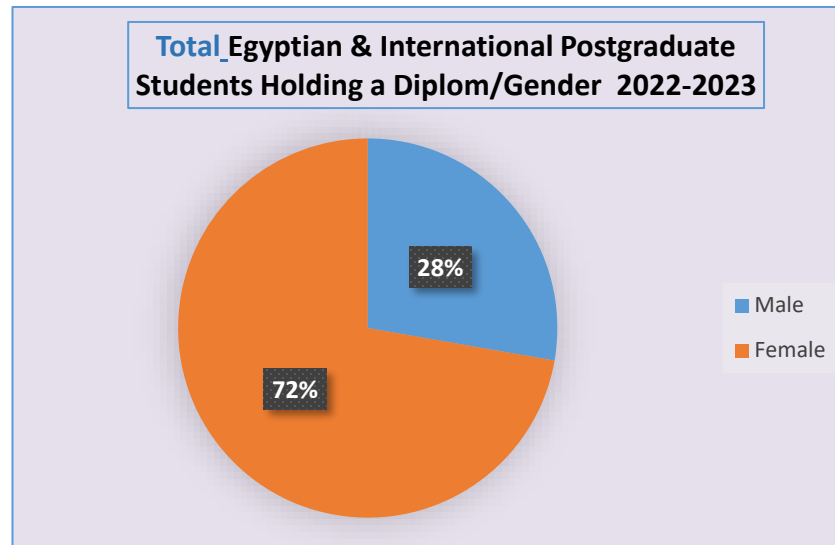


Postgraduate Students Holding Figures (37-38-39)





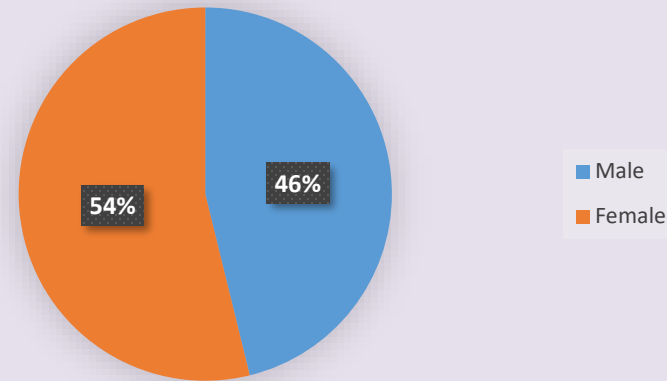
Students Holding Diploma Figures (40-41-42)



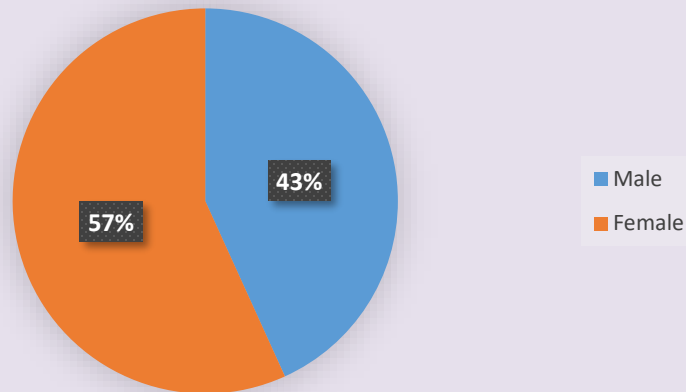


Students Holding Master's Degree Figures (43-44-45)

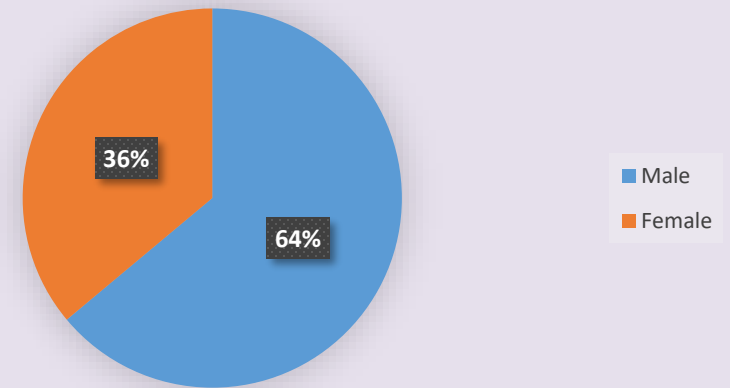
Total Egyptian & International Postgraduate Students Holding a Master /Gender 2022-2023



Egyptian Postgraduate Students Holding a Master /Gender 2022-2023

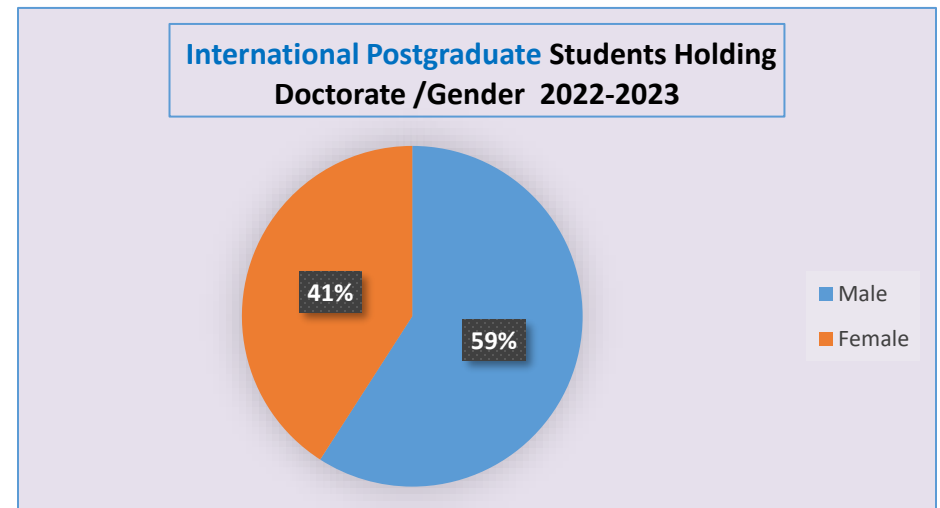
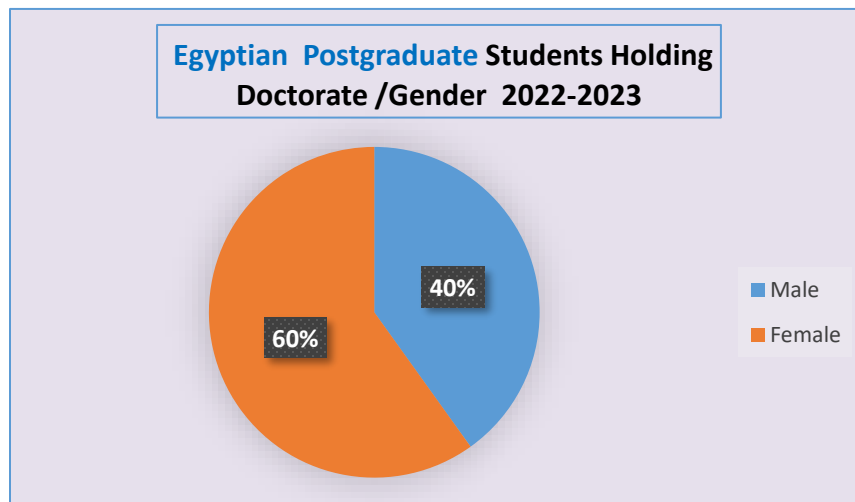
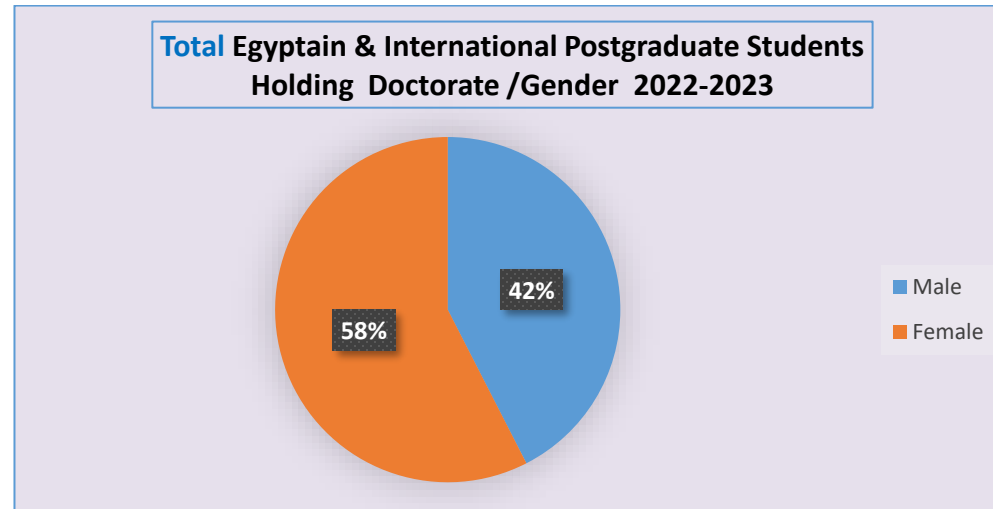


International Postgraduate Students Holding a Master /Gender 2022-2023





Students Holding Doctorate Degree Figures (46-47-48)





Conclusions

1. Women are well represented across all disciplines of the university. They have equal rights and opportunities as men in education, employment, research, and participation in all activities
2. Women are included in both senior and junior roles at the administrative, faculty, and university levels.
3. The percentage of women in leadership positions exceeds that of men in both the administrative apparatus and among faculty members.
4. The percentage of female students at the undergraduate level is higher than that of male students, highlighting the availability of educational opportunities for females.
5. The percentage of female students pursuing postgraduate studies is also higher than that of male students.